

**Life Flight**

Saves time · Saves lives

**ANNUAL  
REPORT**  
— 2023

**1,286  
LIVES  
YOU  
SAVED  
THIS  
YEAR**



THANK YOU FOR HELPING SAVE LIVES

# Greetings

Welcome to Life Flight's latest Annual Report, a testament to the important journey we are on together. This year's report once again highlights the life-saving difference your support has made over the last 12 months and allows us to share news about some of our latest service developments, as well as express our deep gratitude for your unwavering support. We're a community-based organisation, and our ongoing endeavours are only made possible by your remarkable contributions. As you delve through these pages, I hope you'll recognise the pivotal role you've played in bringing our collective vision to life.

Over the last year, the local health sector has undergone significant transformation, most notably with the establishment of Te Whatu Ora (Health NZ) and Te Aka Whai Ora (The Māori Health Authority) and the introduction of Te Pae Tata, the New Zealand Health Plan. Amidst these significant developments in our sector, Life Flight remains a vital life-saving service, providing increasingly necessary rapid access to medical care for those most in need in our local community. For our mission to endure, your steadfast support continues to be essential.

The growing need for our Air Ambulance Service has been a particular area of focus this past year. Over the last decade, the number of these life-saving missions has continued to rise. Despite the variances and challenges experienced during COVID-19, we are poised to soon surpass pre-pandemic mission numbers as the need for our aeromedical services continues to grow. Furthermore, we're responding to New Zealand's evolving health demands, as the population continues to disperse throughout our many wonderful rural communities.



**"Amidst these significant developments in our sector,**

**Life Flight remains  
a vital life-saving**

**service, providing increasingly necessary rapid access  
to medical care for those most in need in our local community"**

To ensure Life Flight continues to meet the growing and changing needs of these local communities, Mark Johnston and his talented team have embarked on a major Strategic Project to upgrade our fleet of Air Ambulance Planes, which you'll hear more about overleaf and throughout this report. On behalf of our Board of Trustees, I want to commend the Life Flight team and our key Service Partners for their tireless efforts throughout this project, particularly in upholding our core values of safety and teamwork to continue to provide outstanding aeromedical care to those in need.

In closing, I want to reiterate our heartfelt appreciation for your support on behalf of the entire Life Flight team and those whom we fly. To our donors, sponsors, funders, volunteers, and everyone who attends our events, ultimately, it's you who helps to ensure that this crucial service is available for the local community 24/7, 365 days a year.

Thank you again for your continuing support.

Warm regards,

**Richard Stone**

**LIFE FLIGHT CHAIR**

## — A message from Mark

The past year has seen us finally exit the challenging operating environment of the COVID-19 pandemic and return to a much more regular pattern of flight operations, after over two years of flying under significantly enhanced safety protocols to keep both our Flight Teams and their patients as safe as possible.

During the year, we purchased three new Beechcraft King Air B200C air ambulance planes from our colleagues at the Royal Flying Doctor Service South-Eastern Section (RFDS SE) in New South Wales. These aircraft will replace our 2 British Aerospace Jetstream 32 air ambulances, and the first plane, ZK-LFA, entered service at the end of 2022. All three King Airs feature extra-wide cargo doors and automatic patient-loading devices, enabling us to manage patient loading and unloading as safely as possible. These planes can also fly faster than our J32s and operate at a higher altitude above any weather that our pilots may encounter around the country while maintaining a lower cabin pressure to help us make our patients as comfortable as possible during their flights with us.

We've also built on our strong working relationship with the RFDS SE Team in Sydney as we explore future opportunities to partner with the world's most respected aeromedical provider. This will likely include the development of joint pilot and crew training initiatives moving forward, together with future fleet



**“The continuing support of the community,**

**especially our regular donors and local community partners, has enabled us to get through the year pretty much unscathed financially.”**

expansion opportunities as we look to grow our future fixed-wing capability locally.

The continuing impact of inflation on the New Zealand economy has again increased our day-to-day operating costs, particularly the fuel bill for our air ambulance planes and our Westpac Rescue Chopper. The continuing support of the community, especially our regular donors and local community partners, has enabled us to get through the year pretty much unscathed financially. Whilst we posted a relatively small operating deficit for the year, this was against some significant additional expenditure as we upgraded our fixed-wing air ambulance fleet to better meet the future demands of the New Zealand health sector.

*continued on next page*

Our fundraising performance was once again exceptional, with the team generating almost \$8M of fundraising income during the year. We successfully renewed our Westpac Rescue Helicopter sponsorship for a further four years, which means that Westpac has now supported our rotary-wing operations for well over 40 years. This extension is linked to our contract to provide helicopter search and rescue services from Life Flight's Wellington base as part of the Central Air Ambulance Rescue Group of 5 North Island Trusts, which the Government has also extended through until 2026.

We welcomed The Hurricanes into our partner family this year, with All Blacks Jordie Barrett, Tyrel Lomax and TJ Perenara visiting the base at the start of their 2023 Super Rugby campaign to get up close and personal with our Flight Teams. Our partnership with The Canes will continue throughout the 2024 season and will include some more exciting joint event initiatives right across the region next year.

Meanwhile, our fixed-wing fleet renewal programme benefited from a very significant and generous \$750,000 grant from Pub Charity – one of our most significant grants ever – to help us complete the necessary refurbishment and certification work on all 3 of our new King Air B200C air ambulance planes prior to them entering service from the end of 2022. This funding boost was further supplemented by several five and six-figure donations during the year from major donors supporting our purchase of these new aircraft.



Teamwork remains at the heart of everything we do at Life Flight. Our highly experienced Pilots, Crew, and Clinical Teams across both our air ambulance planes and Westpac Rescue Chopper are all backed up by our talented Support Teams here at the base, along with our longstanding key operating partners, to ensure that we're available to help people in need 24/7, 365-days-a-year. Our donors and sponsors remain an integral and vital part of our extended team, and without their incredible ongoing support throughout the year, we simply wouldn't be able to help all those people in need in local communities across Central New Zealand. It's this continuing generosity that quite literally enables us to save time and save lives every single day of the year.

So, on behalf of the entire team, I want to say a huge thank you again to everyone who's contributed to Life Flight over the past year for your support during yet another big 12 months of delivering our life-saving aeromedical services to people in need.

**Mark Johnston**  
CHIEF EXECUTIVE

This report is for the financial period April 1 2022 to March 31 2023.





Two planes from our new Air Ambulance fleet parked by our service partner Fieldair Engineering at Palmerston North airport

PHOTO CREDIT: Pieter Jansen

## Our vision

To provide exceptional care in the air

## Our purpose

We help to save lives by providing outstanding aeromedical care and transport to people in need

## Our culture

Our **teamwork** saves lives

**Safety** underpins everything we do

We **support** each other to help those in need

We find **new ways** to be “best in class”

## — Our strategy in action

Each year we strive to improve on our vision and purpose, here are a few examples.

### **OUTSTANDING AEROMEDICAL SERVICE:**

Life Flight is embarking on our biggest mission yet; renewing our Air Ambulance fleet to meet the community's growing needs. This community-funded project will allow our crew to reach isolated populations with limited access to aeromedical services. Learn more on page 8.

### **NEW WAYS TO BE BEST IN CLASS:**

We've upgraded our patient loading system on board our new Air Ambulance fleet. Now equipped with specialised loading arms, designed by the Royal Flying Doctors Service in Australia, and extra wide cargo doors, our crew can lift patients and equipment far more safely and quickly with a new maximum lifting weight of 300kgs. This makes lifting neonatal incubators and stretchers safer and enables us to provide aeromedical care for larger and heavier patients.

### **EXCEPTIONAL CARE:**

We continuously look for ways to improve our safety and patient care. Utilising new technologies is one important route. For example, in the last year, our Westpac Chopper team has implemented handheld ultrasound devices, enabling onboard Wellington Free Ambulance Flight Paramedics to make more informed decisions, as well as an updated LUCAS automated chest compression device, generously funded by Pub Charity. Read about the new technology employed on page 13.



Air Ambulance Pilot Harry and Crewperson Ian lifting a 140kg incubator thanks to the new Patient Loading Device





Our Westpac Chopper crew practising their winch skills with Coastguard NZ

## — Support through our year of **greatest need**

FY23 brought substantial financial challenges. Anticipated expenses included a necessary Westpac Chopper engine overhaul, the new Air Ambulance Fleet acquisition, rising mission numbers and inflation, making it our costliest year, ever.

Yet, amidst these hurdles, an incredibly high level of community support shone through, resulting in our most successful fundraising year.

Thank you to our wonderful grant funders, sponsors and the generosity of individual donors, through gifts in wills, appeal contributions, and even small change in collection buckets.

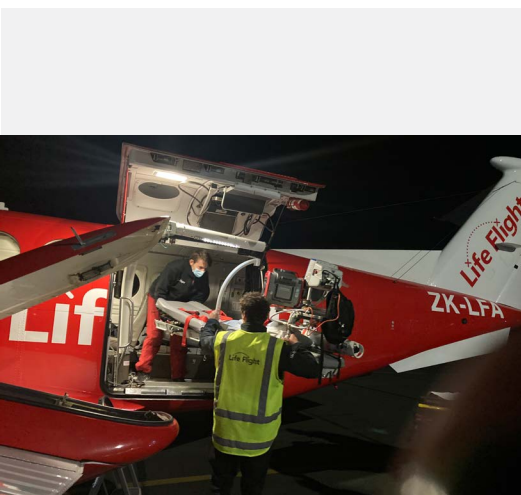
Years of prudent cash reserve management, combined with these acts of kindness, have enabled us to navigate these financial challenges. We extend our heartfelt gratitude for all of the incredible community support throughout this challenging year.

Wellington Free Ambulance Flight Paramedic Hannah using the new handheld ultrasound device



## — Our biggest mission yet

Life Flight is embarking on an upgrade to meet the evolving needs of the community and save more lives; a vital Fleet Renewal Project, replacing our two current Air Ambulance planes with three newer, more advanced Beechcraft King Air B200C planes. This is our biggest mission yet, and we couldn't do it without you.



Seen during this mission to Nelson, Pilot Harry and Crewperson Jack are loading a stretcher utilising the updated Patient Loading Device.

Life Flight's two Jetstream Air Ambulance Planes are 30 years old with high flying hours and, while they have served the community well, they will soon no longer be fit for purpose. Replacing these ageing aircraft was necessary and, furthermore, with the continued increase in demand for our services it was time for Life Flight to grow from two planes to three.

With valuable input from our aviation partner Fieldair, and the team at Wellington Regional Hospital, the Beechcraft King Air B200C was identified as our preferred Air Ambulance aircraft. The Royal Flying Doctor Service in Australia recently had three of these planes come onto the market. After a thorough due diligence process Life Flight finalised the purchase of all three of these aircraft during 2022.



### Major upgrades of the fleet:

- Providing emergency services for bariatric patients (obese) with a wider cargo door and a mechanical loading arm, a first for New Zealand aeromedical care.
- Safer loading system, making loading neonatal incubators, weighing in at about 140kg, a much more straightforward procedure.
- Can land at smaller airfields to increase our reach and provide a more equitable service for isolated communities.
- The King Airs are faster, can fly at a higher altitude, and will approximately halve our patient loading times, saving valuable time on life-saving journeys.



## OUR BIGGEST MISSION YET

The acquisition of these three planes was completed in August 2022, followed by a certification and fit-out process for our NZ operations. Our inaugural mission took place in December 2022.

Costing around \$8.0M, we utilised a variety of funding streams to finance this essential project, including a bridging finance loan from our Major Sponsor, Westpac. However, this project is only possible through support from our local community. During 2023 Life Flight plans to fully transition to King Air operations, while fundraising will continue to conclude this very special project.



Life Flight team welcoming the first King B200C Air plane arriving into Wellington in July 2022



The inaugural mission in our first new air ambulance, December 2022

We are immensely grateful for the generous support we received in this financial year.

### April 1st, 2022 – March 31st, 2023

- Pub Charity
- Evander Management
- Kiwi Gaming
- Four Winds Foundation
- Grassroots Trust
- The Lions Foundation
- Pelorus Trust
- Andrew & Jessica Schofield



## — Meet Lee

Lee had driven down from her home in Auckland to visit friends on their beautiful Masterton farm and was excited about the opportunity to ride one of their horses. As an experienced rider, it never crossed Lee's mind that she would get into an accident.

Lee had only been on the horse a short time before the animal started to buck. Lee clung on desperately, but eventually she was thrown off and landed hard on the rocky ground.

"I could hear someone yelling my name, but I couldn't respond. Apparently, I was unconscious for about half a minute."

Lee regained consciousness but her injuries were severe. She didn't know it at the time, but due to the sheer force of her fall Lee had broken both her legs, all her ribs, as well as her neck, wrist, arm and back. She also had a collapsed lung and had damage to her kidney and spleen. Without urgent medical treatment, Lee would likely have died.

The accident happened in such a remote area that none of her friends had mobile phone reception. One of the farm workers had to drive out to the road to call 111. Within 30 minutes, Lee could hear the Westpac Rescue Helicopter approaching. Despite being in unimaginable pain her first

thought, being the animal lover she is, was that the noise of the Westpac Chopper could scare the foals that were nearby. Her second thought was

**"I'm going to be alright.** These guys are professionals."

Even after multiple surgeries – including a hip replacement – Lee was not out of the woods. Two days after Lee's dramatic rescue, Life Flight was called on again. This time, our dedicated Air Ambulance Crew was needed to transport Lee from Wellington Hospital to North Shore Hospital for more surgeries. When someone is as injured as Lee was, even moving from place-to-place needs specialist medical care and the safest transport possible.

Lee has spent some time recovering in a rehabilitation centre. She is now home and recovering slowly but knows she is lucky to be alive.



**"I could hear someone yelling my name, but I couldn't respond.**

**Apparently, I was unconscious for about half a minute."**

— Lee

# Missions you made possible



Parked on the Christchurch Hospital rooftop helipad



1,286

PATIENTS FLOWN

460

PATIENT SUPPORT WHĀNAU FLOWN

326

BABIES/CHILDREN FLOWN



## Training our teams

Training is an integral part of Life Flight's day-to-day operations to make sure the crews are ready for anything, anywhere, anytime.

Training ranges from ensuring we meet standards set by agencies such as Te Whatu Ora and the Civil Aviation Authority, to ensuring our rescue techniques are up-to-date, safe and efficient.

## Training missions at a glance

**124**

Total number of training missions

**80**

Number of Westpac Rescue Helicopter training missions

**44**

Number of Air Ambulance Plane training missions



## Pilot training

To ensure our renewed Air Ambulance fleet operates seamlessly, pilots went through comprehensive Ground, Cockpit, Loading Procedure and Air training. We extend our gratitude to the Ray Watts Charitable Trust for their generous \$15,000 grant, which greatly assisted in covering these essential training costs.



The new Hamilton-T1 Ventilator being prepared for its next job



This custom designed trailer will enable safer missions, and easier Westpac Chopper maintenance

## — Equipped for the job

Thanks to the support of Grant Funders and the community of supporters, Life Flight has new equipment and upgraded existing technologies for our crew.



### **New Helicopter Trailer**

The Westpac Rescue Helicopter trailer enables safe and efficient journeys.

The upgraded version is a lighter and wider custom-designed metal trailer, providing mechanics with more space and ensuring even safer landings. This vital equipment is thanks to grants of \$25,000 from the Kersley family and \$3,700 from the Nikau Foundation.



### **New HAMILTON-T1 Ventilator**

Funded by Kiwi Gaming with a \$50,284 grant, our new ventilator is top-of-the-line and ensures patients receive the same quality of ventilation during flights as at the bedside.



### **More Equipment**

- PTV and Air Ambulance stretchers updated to the safer, newer, Ferno model.
- Air Ambulance pilots have four new aviation headsets.
- Westpac Chopper crew have a new flight helmet and flight survival vests.



“The crew was truly amazing. They were so

**caring and  
understanding,  
truly professional  
and personal.”**

— Alex

## — Meet **Taylor**

Nelson couple Alex and Ben were so excited to be parents for the first time; decorating, painting, and preparing for baby Taylor’s arrival into this world. However, five weeks before she was due, Alex went into early labour.

Alex was able to hold off the delivery for another six days on advice of the doctors. When they couldn’t wait any longer, and the medical team were ready, baby Taylor was born in just 90 minutes.

“Because she was born so quickly, she was taken away to be monitored, which meant I wasn’t able to hold her”.

Once they were finally able to be with their precious newborn, Alex and Ben were adoring being by her bedside when suddenly the unthinkable happened. Both of baby Taylor’s lungs collapsed – a condition called bilateral pneumothorax.

Suddenly, everything became a blur. Needles were placed in Taylor’s tiny chest to stabilise her, but the doctors knew that she would need to cross the Cook Strait to get to Wellington Hospital immediately.

Taylor was placed on a ventilator and carefully flown over to Wellington Hospital’s Neonatal Intensive Care Unit (NICU) in Life Flight’s Air Ambulance Plane.

“The crew was truly amazing. They were so caring and understanding, truly professional and personal.”

Two days later, Taylor began to breathe by herself and was able to come off the ventilator, much to the relief of her eagerly awaiting yet exhausted parents. Now out of hospital and back in Nelson, Baby Taylor has experienced her first Christmas with her family.

“The love we have for her; words just can’t describe it. I couldn’t imagine life without her”.



## — At the air base

With the world opening up after the COVID-19 lockdowns, we were once again able to open our doors to new and old friends alike. A huge thank you to all of our amazing volunteers and supporters who made these events possible.

### Open Day

Our first open day since 2020 was also our biggest ever! Over 6,000 people enjoyed demos from emergency services, entertainment, and tasty food at the airbase, made possible by our Event Partner Interislander.

### Life Flight Gala presented by Hiremaster

One night a year, Hiremaster, AV Media, Pak'nSave Petone, and Star Hospitality transform the hangars into an elegant and unique event. The generosity of our friends and VIP guests raised over \$120,000, last October.



The crowds at our  
biggest open day yet!

Westpac Chopper pilot Dylan and crewperson Logan getting up close and personal with TJ Perenera, Tyrel Lomax, Jordie Barrett from the 'Canes!



## New partners

We were delighted to be chosen by the Hurricanes as their Charity Partner for the 2023 season. To launch the season, some of the players visited the airbase to meet the crew and learn about the impact of the partnership.

# — Out in the community



One of our Street Appeal volunteers painting the town red!



Mitre10 Mega Marlborough Christmas in the Park

We were thrilled to be chosen by partners and friends as their charity of choice for fundraising events; below are just a few! Thank you to the organisers for the incredible mahi that went into making these events such a success.

## **Westpac Chopper Appeal Month**

Major Sponsor, Westpac, hosted their annual Chopper Appeal month. Across a local quiz night, a beer-tasting event, and the annual street appeal, these initiatives saw a remarkable display of community support and generosity, resulting in over \$100,000 raised for Life Flight.

## **24th and 25th ELE Champions Charity Luncheon**

We were delighted to be the charity of choice for the 24th and 25th ELE Champions Luncheon, organised by Ian Klinac. They were inspiring events celebrating sporting legends such as Ian Kirkpatrick, Sir Wayne (Buck) Shelford, and many more. Across the two events, Champions raised a whopping \$300,000.

## **Robert Walters Golf Day**

At the Robert Walters Golf Day, we had a fantastic turnout, welcoming 31 teams, 23 sponsor contributions, and raising over \$13,500.

## **Mitre10 Mega Marlborough Christmas in the Park**

Our friends at Mitre10 Mega Marlborough put on a classic Kiwi Christmas in the park. We had Westpac Chopper crewperson Julian on the big screen thanking the crowds for their support.



Westpac Chopper crew Harry and Julian, interviewed by Jason Pine for the 25th ELE Champions Luncheon alongside past patient, Matt



## — The response to **Cyclone Gabrielle**

Disaster relief is an important part of our role and can take us to any part of the country at any time. Both our Helicopter and Plane Teams played supporting roles following Cyclone Gabrielle, alongside our Rescue Helicopter colleagues in the Central North Island, the New Zealand Defence Force, and other Emergency Services, who all did an outstanding job in the face of extremely challenging conditions.

In our efforts to support the local front-line teams, weather conditions initially hindered our Westpac Chopper from flying north. Once the storm cleared, our Westpac Chopper flew blood urgently from Wellington Hospital to Hawke's Bay for transfusions and, while in the region, we aided local teams by providing search and rescue support. Our Westpac Chopper crewperson Colin also travelled to Hawke's Bay and pilot Harry to Gisborne, offering relief to the hardworking local rescuers. In the following six weeks our crews also flew 13 patients from the affected regions to critical care.



## — A daring rescue off the Kaikōura Coast

A sailboat lost at sea. Eight metre swell. Three people are on board. This isn't the start of a movie – this was the life-threatening scenario three Kiwis faced twenty miles off the Kaikōura coast.

Those on board were sailing north from Christchurch when their engine broke down and lost power. Sea conditions were rough, and worsening. The sailboat was being tossed around in eight-metre swells and high winds.

The sailors set off their distress beacon. The boat was taking on a dangerous amount of water. At the Life Flight airbase in Wellington, crewperson Julian answers the emergency call.

As he hangs up the phone, he knows the clock is already ticking for the distressed sailors. He alerts pilot Harry and Wellington Free Ambulance flight paramedic Hannah of the mayday call, and they calmly and methodically run through their checklists.

With the knowledge that it is a water rescue, paramedic Hannah grabs her wetsuit, crewperson Julian loads the life raft, and pilot Harry checks the flight path. The crew

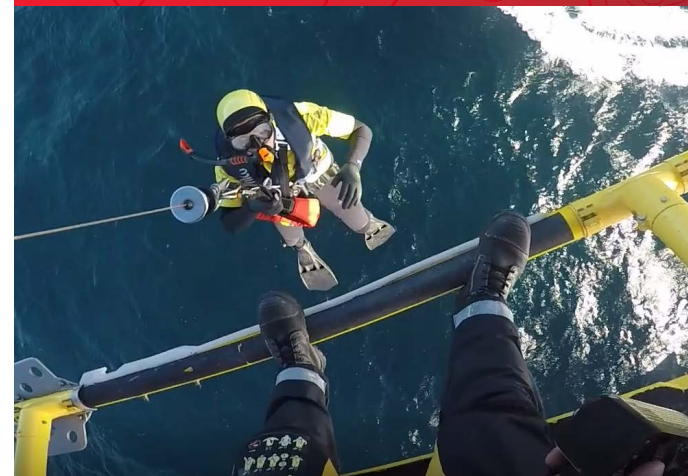
are airborne and speeding south in under ten minutes.

The crew relies on world-class training, quick thinking, and quality equipment in every mission. Julian says one of the most challenging parts of the job is not always knowing what you're flying into. Julian says:

“Things aren't always as they seem, and you need to be ready to adapt. The sailboat rescue was like no winch we had done before. When we got there, the boat radio wasn't working, so we couldn't communicate with them. It was too dangerous to winch paramedic Hannah onto the boat, so we had to put her in the water to swim to the boat with the winch. Three times she had to do that. The boat sank five minutes later.”

Despite the challenging conditions, the crew rescued all three people on the sailboat before it sank.

Taken during the rescue, as Crewperson Julian lowers Wellington Free Ambulance Paramedic Hannah into the 10 metre waves



**“It was too dangerous to winch paramedic Hannah onto the boat, so**

**we had to put her in the water to swim to the boat with the winch. Three times she had to do that. The boat sank five minutes later.”**



# Sponsors

The Trust gratefully acknowledges the contributions and support received from the following companies and organisations.

## Major Sponsor



## Air Ambulance Sponsor



## Vehicle Sponsor



## OUR NEWEST LIFE MEMBER

- › Ian Pirie

We bid a fond farewell to Ian Pirie, who retired after more than eight years of service as a Trustee. In recognition of his exceptional commitment as a Life Flight fixed wing Captain for ten years, and Life Flight's CEO for two years, Ian was honoured as a Life Member.

## AMBASSADORS

- › Bill Day
- › Clive Button
- › Juliet Best

## PATRON

- › Her Excellency, The Right Honourable Dame Cindy Kiro, GNZM, QSO, Governor-General of New Zealand



# Grant funders

1 April 2022 – 31 March 2023

Life Flight would like to thank these wonderful organisations for their ongoing support. Grants help Life Flight to provide 24/7 emergency air services 365 days a year and are hugely appreciated.



Our Westpac Chopper crew responding to a call out in Stokes Valley



PHOTO CREDIT: Chris Gee

Bowen Trust	Nikau Foundation
Bob and Dorothy Garratt Family Trust	Paddy Brow Charitable Trust
Dorothy L Newman Charitable Trust	Pelorus Trust
EM Pharazyn Trust	Porirua City Council
F H Muter Trust	Pub Charity
Four Winds Foundation	Rannoch Charitable Trust
Gaynor Charitable Trust	Ray Watts Charitable Trust
Grassroots Trust Central	SJ Shayle-George Charitable Trust
Ian & Beverly Newton Charitable Trust	TG Macarthy Trust
Jack Jeffs Charitable Trust	The Lion Foundation
JBS Dudding Charitable Trust	The Nick Lingard Foundation
Kāpiti Coast District Council	The Phillip Verry Charitable Foundation
Kiwi Gaming Foundation	Thorburn Charitable Trust
Leonard Monk Charitable Trust	Trust House Foundation
McSyth Charitable Foundation	Paraparaumu RSA Poppy Fund Trust
Marlborough District Council	Upper Hutt Cosmopolitan Club
Masterton District Council	Wellington City Council
New Zealand Community Trust	W N Pharazyn Trust

# Gifts in Wills

We are very humbled to have received such exceptional generosity from supporters who have passed and remembered Life Flight in their Wills. This year these special supporters contributed a total of \$1.28M.

Gifts received from estates in this financial year included:

Estate of K D Allen

Estate of G J Beck

Estate of L Bowie

Estate of A Carr

Estate of G Claridge

Estate of G Crook

Estate of B D Duncan

Estate of N R Gardiner

Estate of G K Harris

Estate of R Lloyd

Estate of V Luc

Estate of H Smith

Estate of R Smith

Estate of M V Taylor

Estate of M Thompson

Estate of J M Gay Wallace

Bequest of R P White



One of our new Air Ambulance planes on its first mission to Greymouth, July 2023

## These Gifts in Wills will fund life-saving missions,

affording parents, grandchildren, aunts, and  
uncles across the community more precious  
time to spend with their families.



We are able to charge government agencies for approximately half of the funds required to keep our service operational. This means there is a significant annual funding shortfall, which our wonderful supporters donate toward. Life Flight also keeps at least three to six months' worth of operating costs in reserves.

### Date 1 April 2022 – 31 March 2023

Operating Revenue	\$6,400,000
Less Operating and Administrative Expenses	\$14,500,000
Operational Deficit	(\$8,100,000)
Fundraising Revenue	\$7,800,000
Operating Deficit for the Year	(\$300,000)

We are a registered charity (#CC24283) and abide by the codes and standards of the Fundraising Institute of New Zealand.





In the cabin of the  
new Air Ambulance

# Life Flight

Saves time · Saves lives

Your support through a  
challenging financial year has  
kept our aircraft in the skies  
above NZ, saving time and  
saving lives.

You have helped friends,  
whānau, neighbours and  
communities with your  
generosity - we couldn't  
have done it without you!

**The Life Flight Trust**  
PO Box 14448, Kilbirnie,  
Wellington 6241  
(04) 920 2242  
[info@lifeflight.org.nz](mailto:info@lifeflight.org.nz)  
[www.lifeflight.org.nz](http://www.lifeflight.org.nz)



Photography donated by Lindsay Keats

**THANK YOU**  
— FOR YOUR SUPPORT